

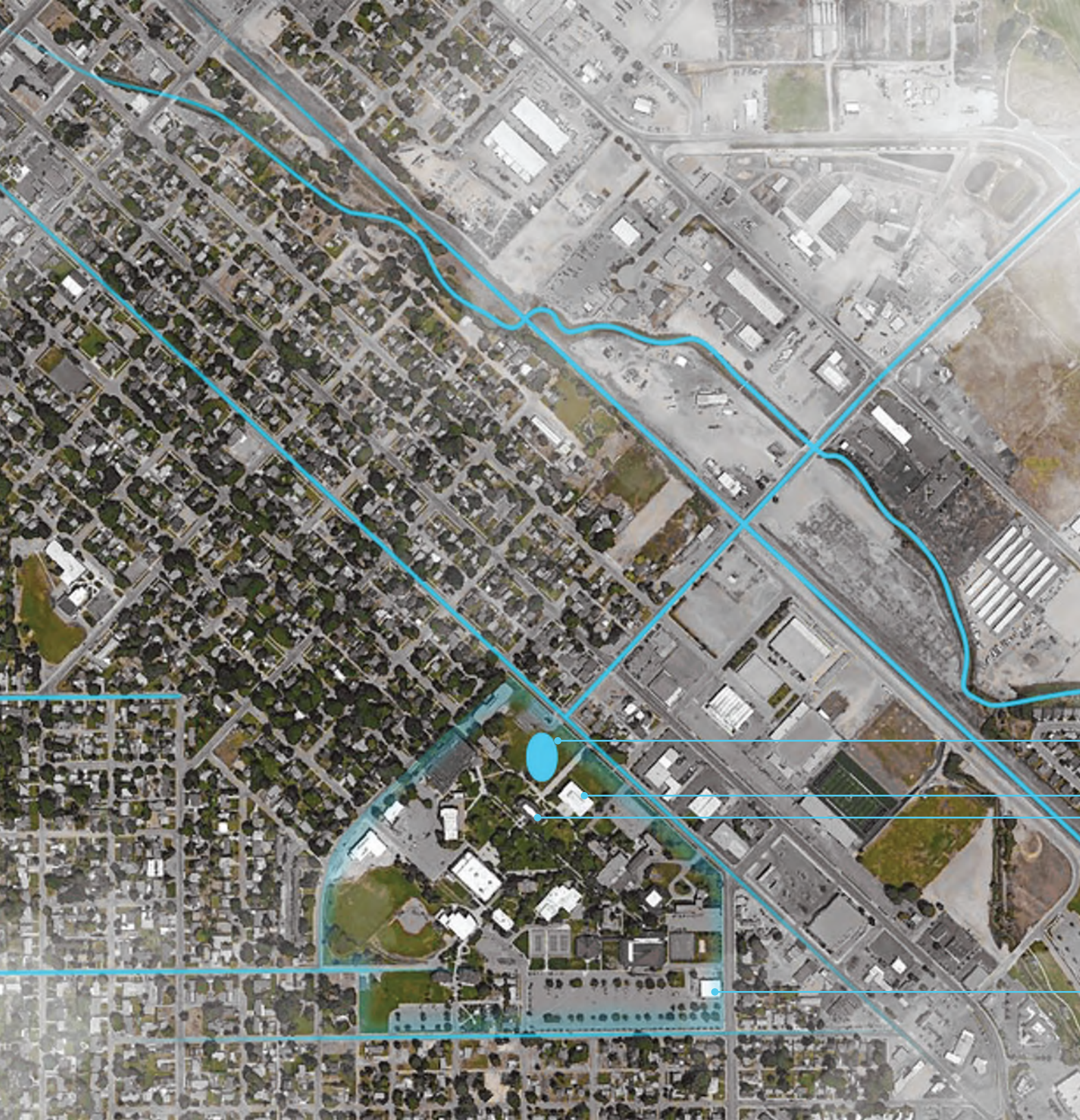
CLIENT VISION

The College of Idaho tasked the design team to: “transform the library from a cloistered space for quiet learning into a dynamic complex for intellectual exchange – an intellectual commons that draws together the realms of liberal learning.”

The College’s vision for their library:

“a light, airy and inviting space, yet one that gives the students the sense of being surrounded by something bigger than themselves.”





The Cruzen-Murray Library is located on the College of Idaho campus at the terminus of a prominent roadway into the city of Caldwell, Idaho.

The new library replaces the former Terteling Library, which is programmed for adaptive re-use.

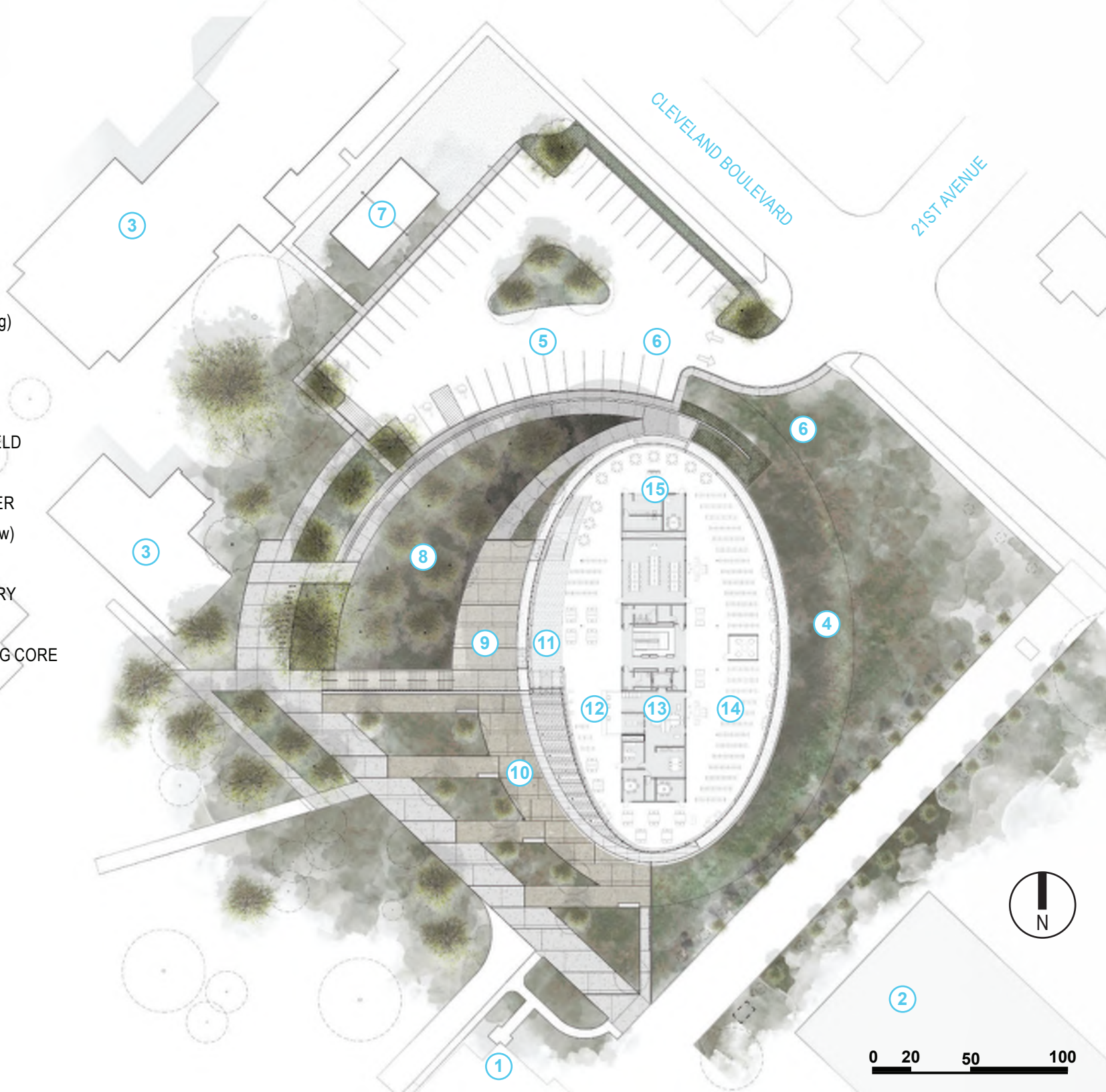
CRUZEN-MURRAY LIBRARY

TERTELING LIBRARY
STERRY HALL

COLLEGE OF IDAHO CAMPUS

FIRST FLOOR PLAN

- 1 STERRY HALL (existing)
- 2 TERTELING LIBRARY (existing)
- 3 RESIDENCE HALL (existing)
- 4 LANDSCAPE BERM
- 5 PARKING
- 6 VERTICAL GEOTHERMAL FIELD
- 7 VOLLEYBALL COURT
- 8 LANDSCAPED AMPHITHEATER
- 9 PERFORMANCE PLAZA (below)
- 10 UPPER PLAZA
- 11 MAIN ENTRY + CIVIC GALLERY
- 12 SERVICE DESK
- 13 ADMINISTRATIVE + TEACHING CORE
- 14 LIBRARY STACKS
- 15 LIBRARY CAFE

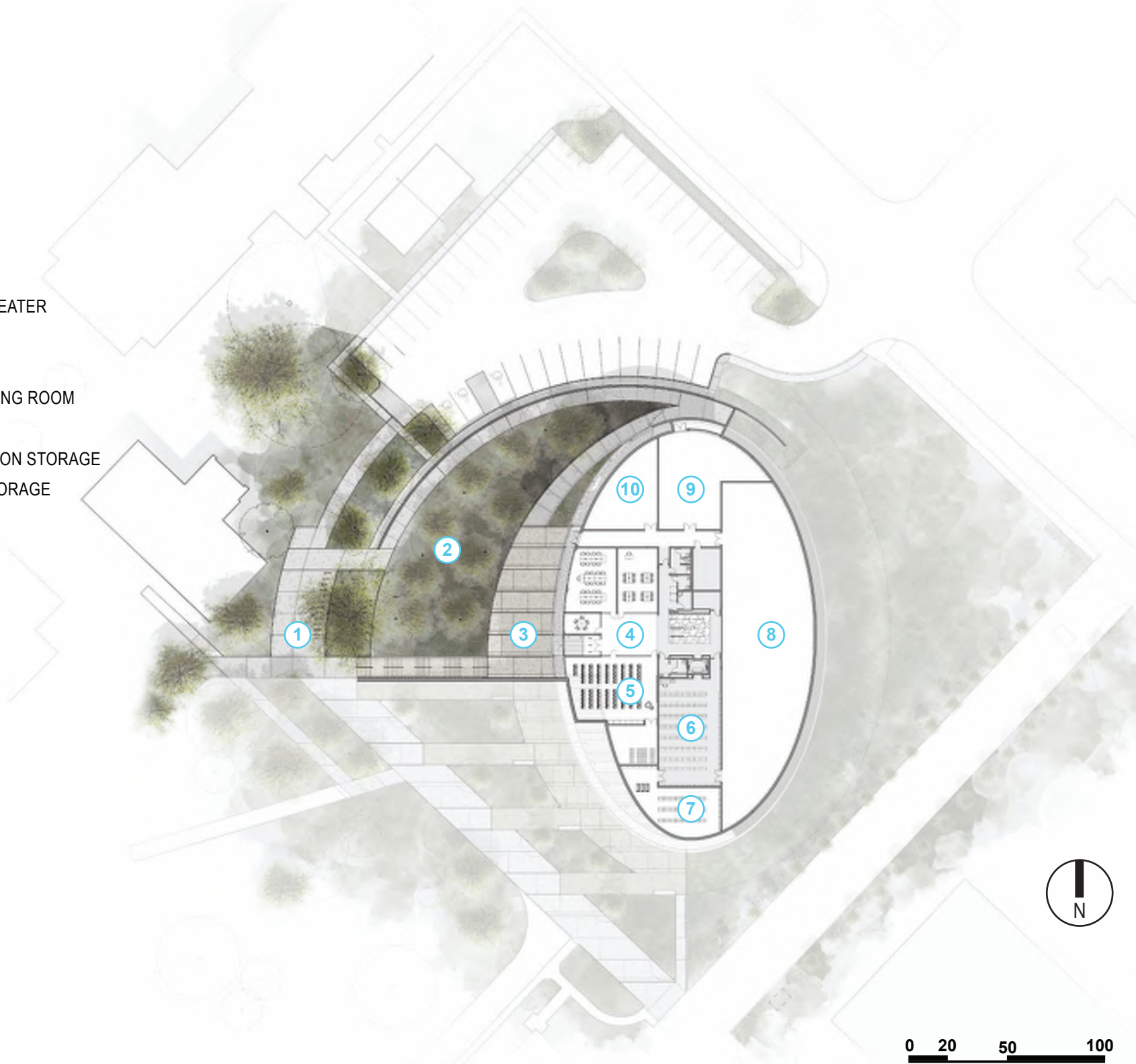


CAMPUS CONTEXT



PLAZA FLOOR PLAN

- 1 BICYCLE PARKING
- 2 LANDSCAPED AMPHITHEATER
- 3 PERFORMANCE PLAZA
- 4 LOBBY
- 5 LARGE FLEXIBLE MEETING ROOM
- 6 ARCHIVE STACKS
- 7 CAMPUS ART COLLECTION STORAGE
- 8 CAMPUS FACILITIES STORAGE
- 9 MECHANICAL ROOM
- 10 CAMPUS DATA CENTER

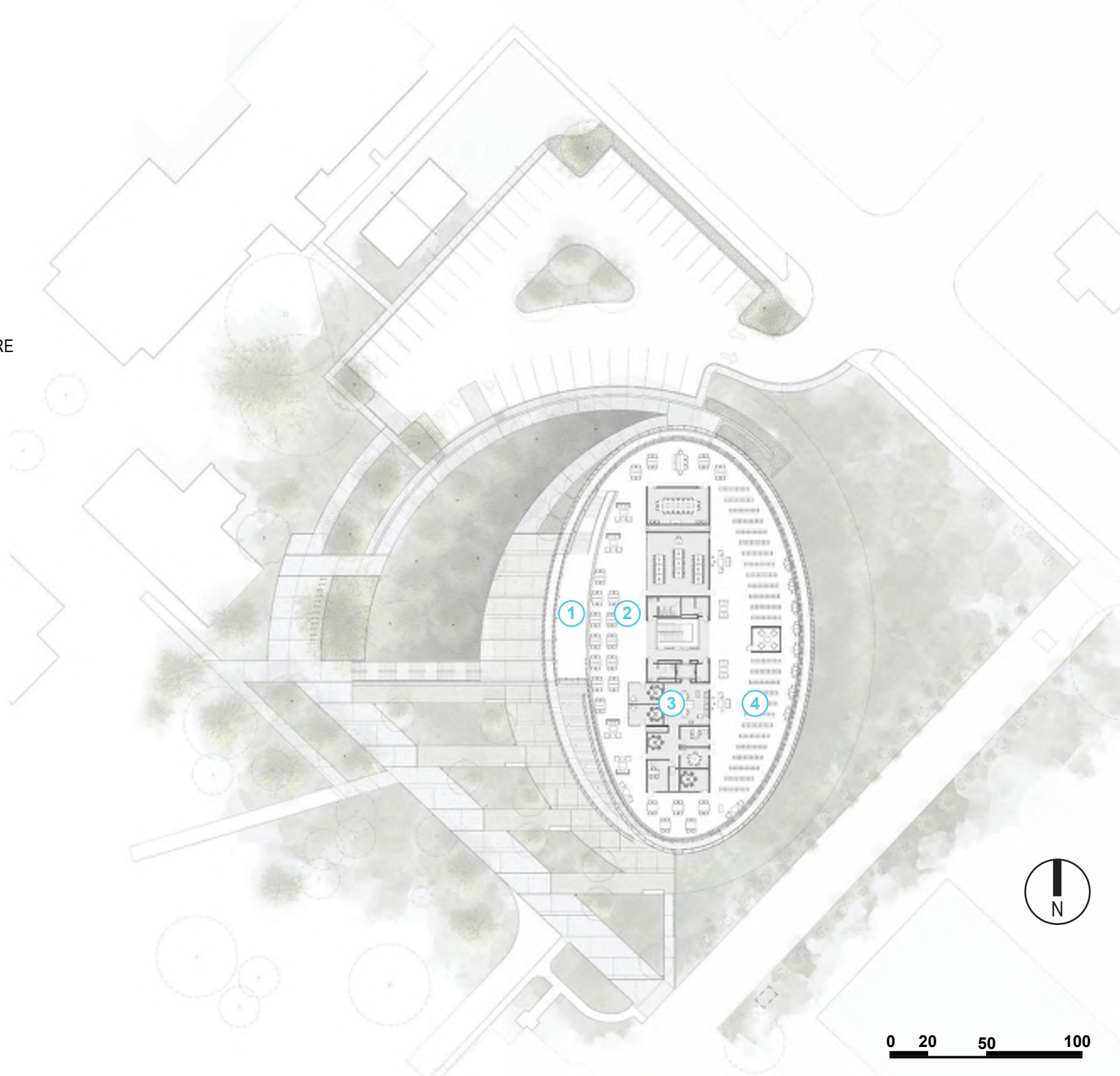


0 20 50 100



SECOND FLOOR PLAN

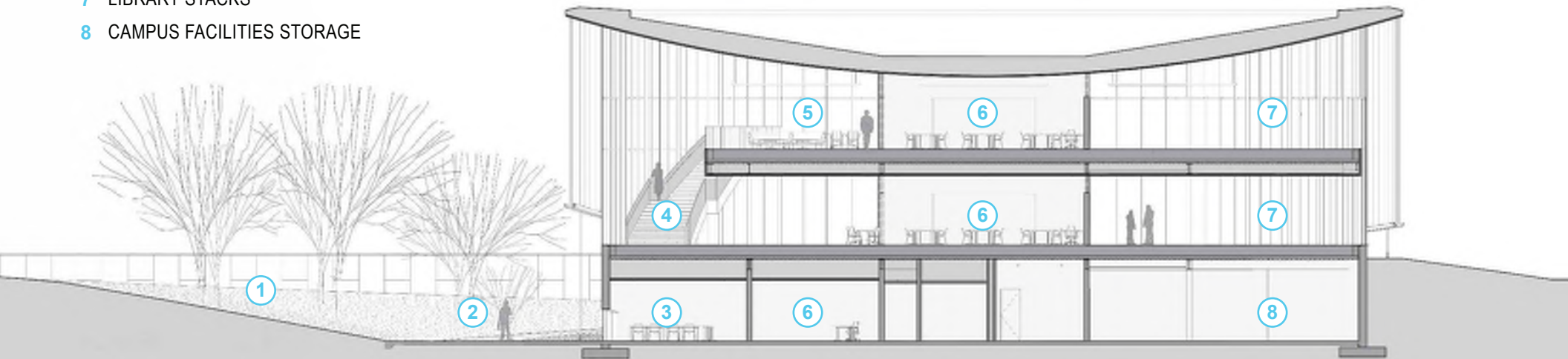
- 1 CIVIC GALLERY
- 2 MAIN READING ROOM
- 3 ADMIN + TEACHING CORE
- 4 LIBRARY STACKS



0 20 50 100

BUILDING SECTION

- 1 LANDSCAPED AMPHITHEATER
- 2 PERFORMANCE PLAZA
- 3 24-HOUR COMPUTER LAB
- 4 CIVIC GALLERY
- 5 MAIN READING ROOM
- 6 CLASSROOM + MEETING ROOM
- 7 LIBRARY STACKS
- 8 CAMPUS FACILITIES STORAGE



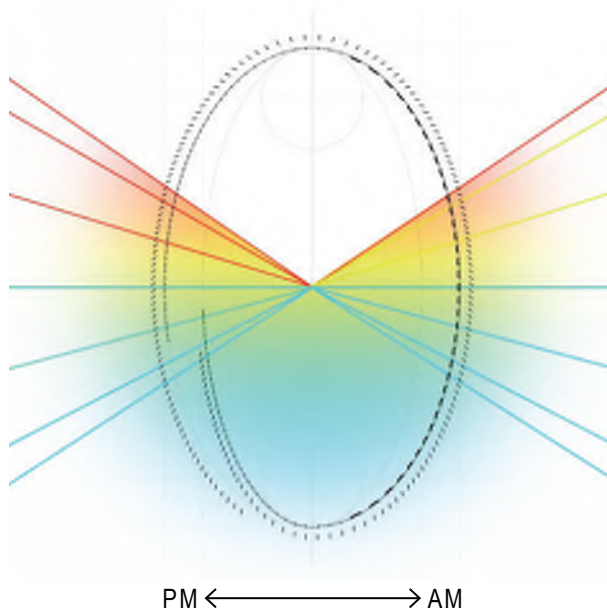


DAYLIGHTING

The glazed façade is veiled by a spiraling array of 195 vertical perforated corten steel shade fins. The tensioned shade fins are suspended beneath a deeply overhanging cedar ceiling / soffit.

Each perimeter fin is individually oriented in response to a rigorous solar analysis and the results of iterative energy modeling. Each fin orientation invites direct natural light into the library at the appropriate times of the year and throughout each day.

Early morning light pre-heats the library in the cold winter months, while the vertical fins and deep overhang shade the library during the hot summer.



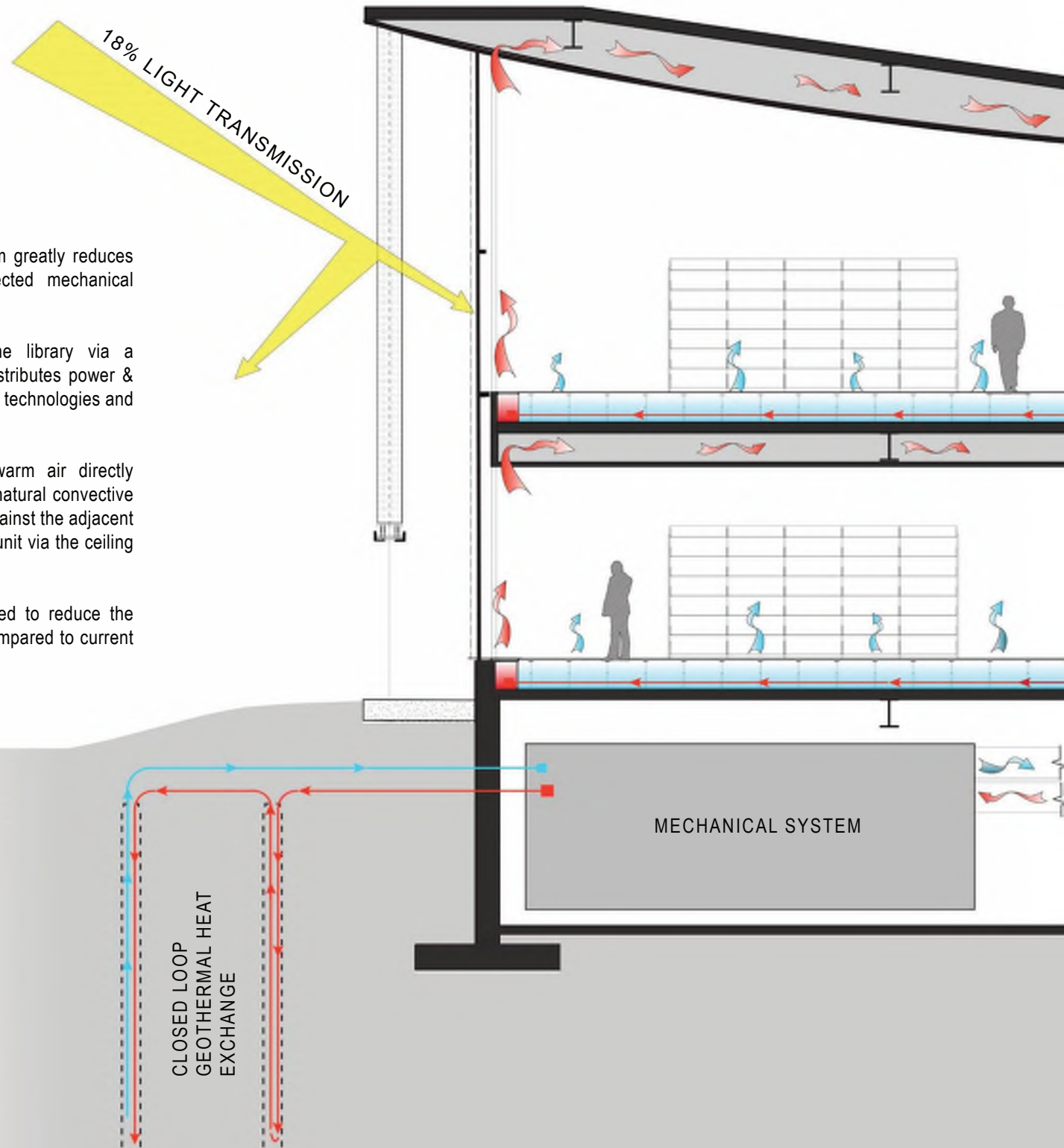
INTEGRATED SYSTEM

A geothermal ground source heat pump system greatly reduces life-cycle operating costs and extends expected mechanical system life.

Conditioned air is distributed throughout the library via a pressurized access floor plenum which also distributes power & data and provides flexibility for changes in future technologies and pedagogy.

A perimeter radiant heat system provides warm air directly adjacent to the exterior glazing and initiates a natural convective cycle within the interior space. Warm air rises against the adjacent glazing and returns to the building air-handling unit via the ceiling & roof plenums and vertical chases.

These integrated system solutions are expected to reduce the library's annual energy consumption by 61% compared to current ASHRAE requirements.



VEILED FACADE



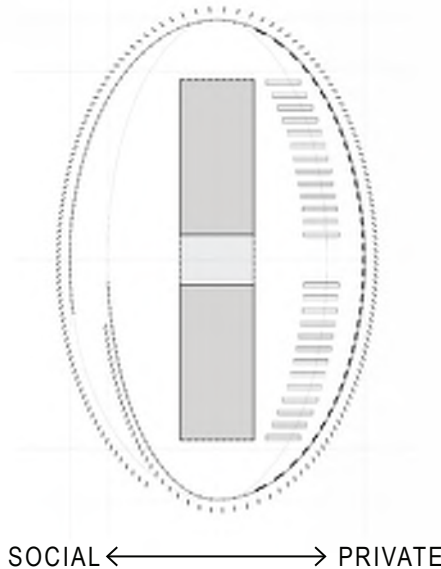
SOCIAL ENGAGEMENT

The Cruzen-Murray Library inverts the 20th-century library diagram of the great central reading room surrounded by book stacks, offices, and meeting spaces. Instead, teaching classrooms and administrative offices are placed in a central “core,” which also serves as a hub for vertical circulation.

The main entrance at the ground level is located on the west side of the building serving as a welcoming invitation to the campus.

A grand sculptural stair leads visitors to the large reading room placed on the second floor overlooking the two-story civic gallery.

Public, social spaces face the existing campus and quadrangle to the west, with quiet study spaces shielded by the book stacks which are arrayed east of the core on the ground and second levels.



MAIN ENTRANCE



AMPHITHEATER



CAMPUS BEACON



UNFURLING ENTRY



CIVIC GALLERY



MATERIAL PALETTE

A prominent collection of Imari porcelain (donated by the library's benefactors) is displayed adjacent to the central stair at the heart of the building.

The library's interior finishes reflect a simple material palette influenced by the local Idaho landscape. Furniture selections encourage moments for casual dialogue and support technologies for collaborative meeting spaces.



- 1 COLLABORATION WALLS
- 2 STAFF OFFICE
- 3 SERVICE DESK



COMMUNITY

Over 150 members of the College of Idaho and Caldwell communities gathered to form a book brigade to deliver the collection from the former Terteling Library to its new home at the Cruzen-Murray Library. The College's video documenting the book brigade can be viewed in via the qr code below. Despite the challenges of the COVID pandemic, the library has become a community asset and source of pride, hosting and supporting community engagement through education, the arts, commerce, and significant life events.



CENTRAL STAIR



CORE CLASSROOM





$$\frac{d}{dt} \left(\frac{1}{r} \right) = -\frac{1}{r^2} \frac{dr}{dt}$$
$$\frac{d}{dt} \left(\frac{1}{r} \right) = -\frac{1}{r^2} \frac{dr}{dt}$$
$$\frac{d}{dt} \left(\frac{1}{r} \right) = -\frac{1}{r^2} \frac{dr}{dt}$$



