

“Asante Library is not just a library, but a spatial experience where people thrive and celebrate knowledge.”



## SURPRISE, ARIZONA

Project is located in City of Surprise and sited on the northeast quadrant of Asante Park.

The park itself serves as a regional retention basin which is three-feet deep and drains into a greenbelt along Grand Avenue into the adjacent canal.



N PAT TILLMAN BLVD.

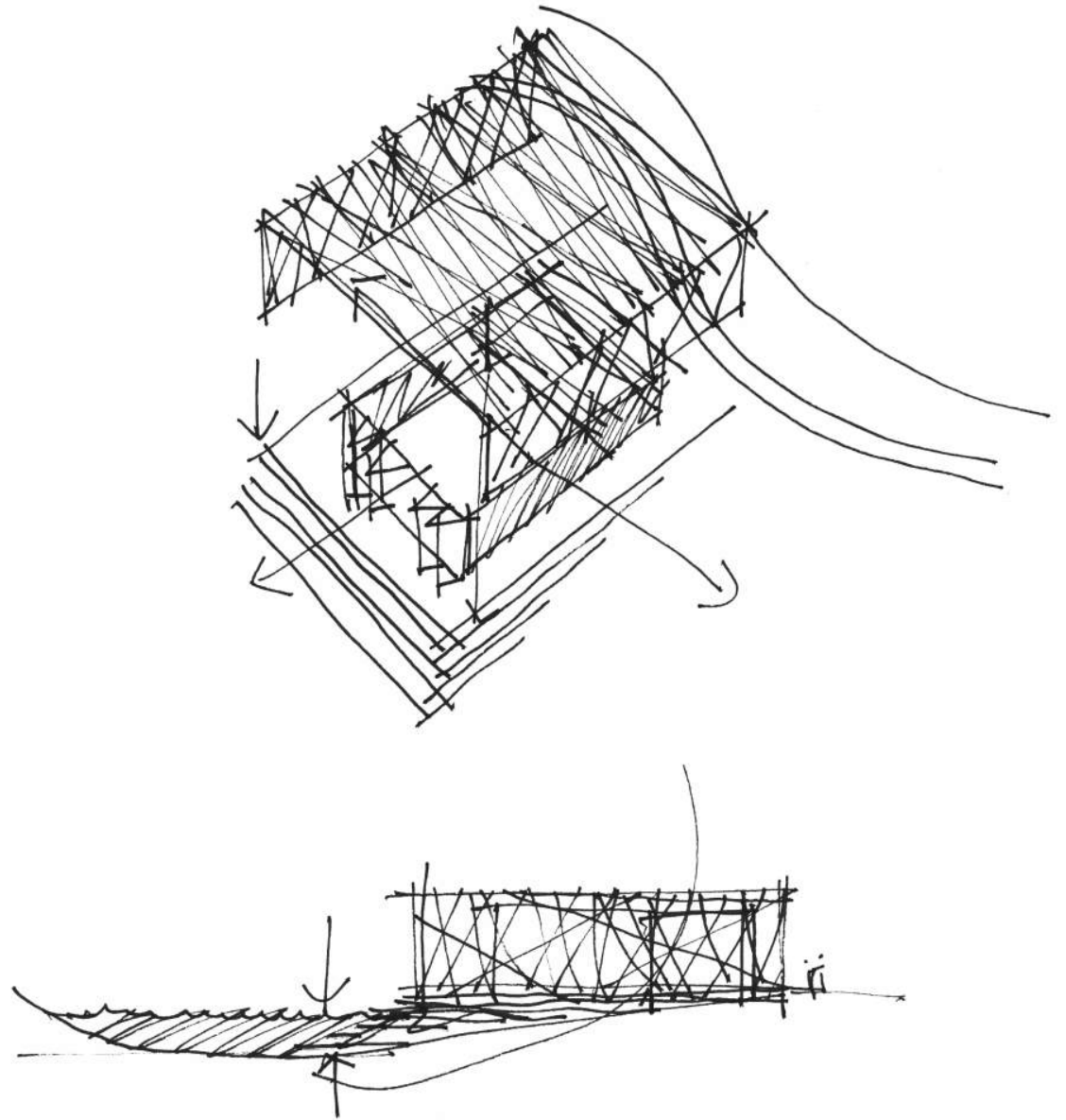
W. GRAND AVE

N 163RD AVE



## CONCEPT

The project consists of a 10,000 square foot library sited on a twelve-acre park. Given the context and site set in the park, the design of the library seeks to emulate dappled sunlight and shadow play as one would experience under a tree canopy

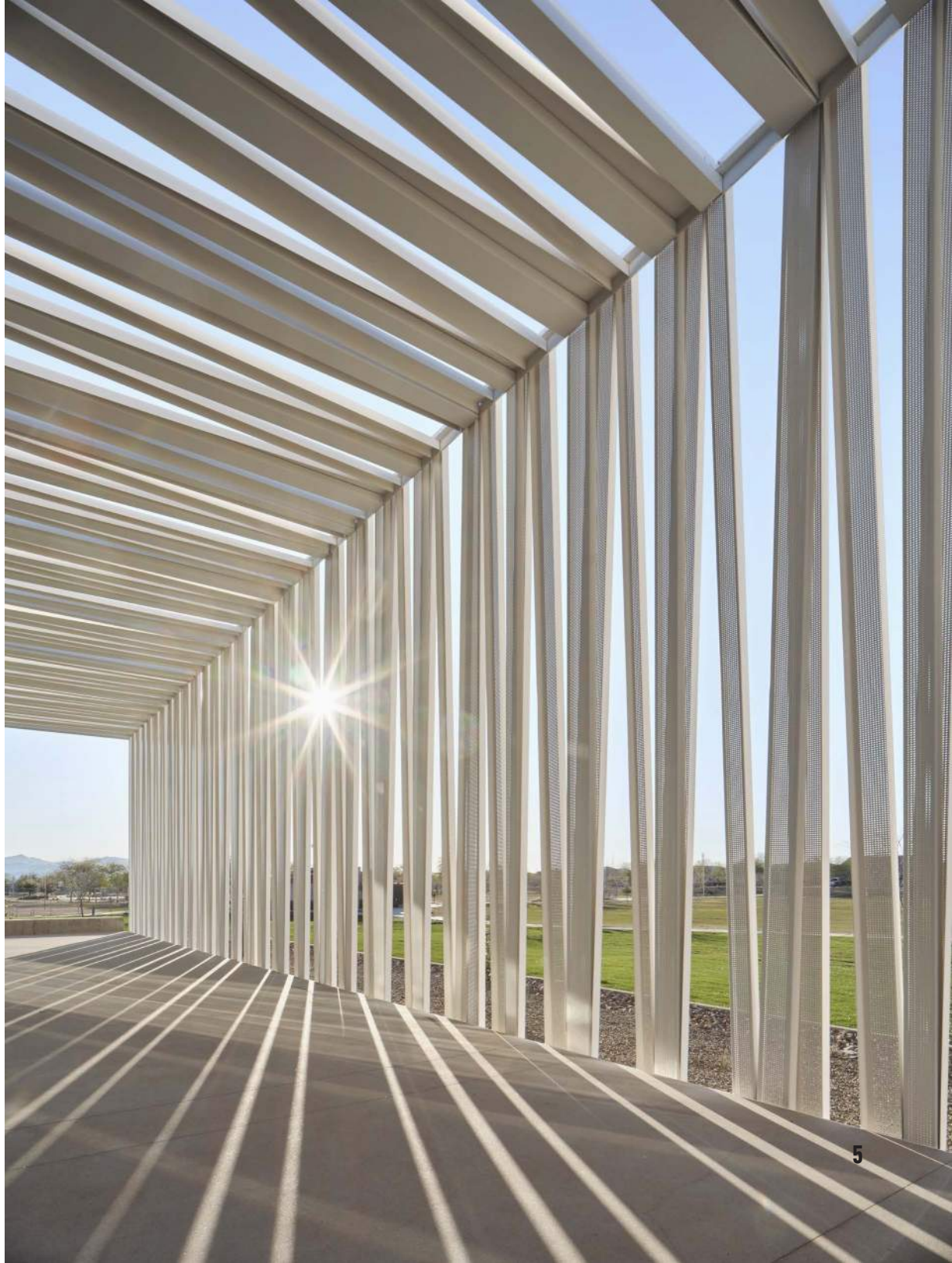


## MATERIALITY

A simple palette of durable materials were utilized requiring minimal maintenance over time, and in turn, reducing future consumption of natural resources.

The simplistic nature of the scrim is built of various perforated steel stud channels that rotate, angle and nest together. The outcome creates a dynamic façade with filtered sunlight, shadow play, and an artistic draw back to a tree canopy in the park.





# ARRIVAL PLAZA

Arrival to the library is through a multi-purpose entry plaza with integrated bench seating shaded under the tree canopies and landscape. The plaza is used for library functions, community gatherings and exhibitions.

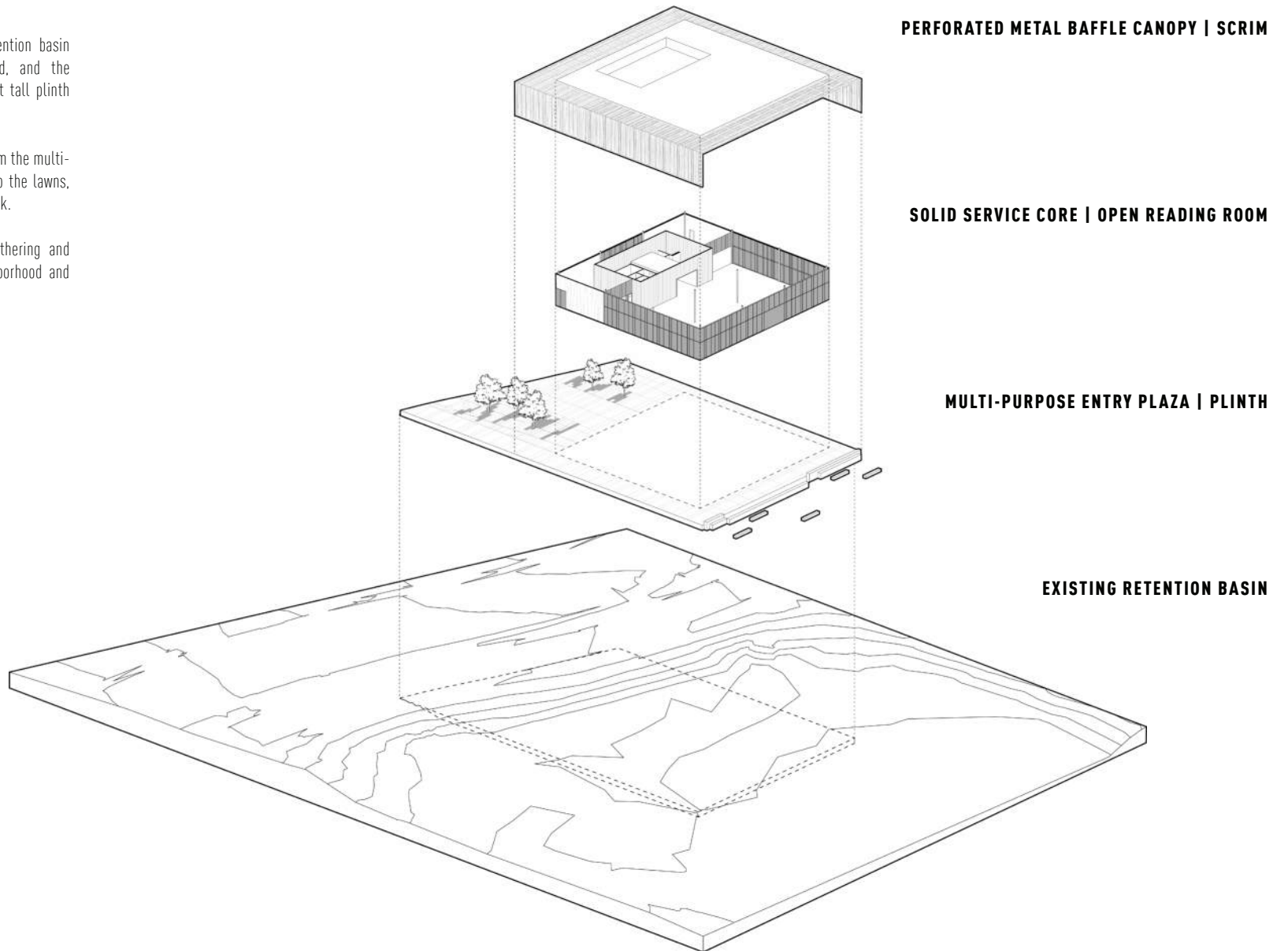


## PROGRAM

To reduce developmental impact on retention basin capacity, site disturbance is minimized, and the new library facility is built on a five-foot tall plinth extending out into the park.

The plinth provides for easy movement from the multi-purpose entry plaza, through and down to the lawns, acting as a terrace for activities in the park.

The library serves as an essential gathering and meeting space for the developing neighborhood and community.



## SITE PLAN

- 1 MULTI-PURPOSE ENTRY PLAZA
- 2 LIBRARY READING ROOM
- 3 LIBRARY PARKING
- 4 OUTDOOR EVENT SPACE
- 5 PARK GREEN SPACE | RETENTION BASIN
- 6 BALL FIELD AND RAMADA BEYOND





**ENTRY PORTAL | SERVICE DESK**



## FLOOR PLAN

The library building consists of a large open reading room with floor to ceiling glass on all sides affording views of the park and White Tank Mountain range in the distance.

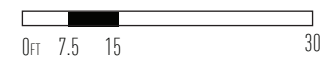
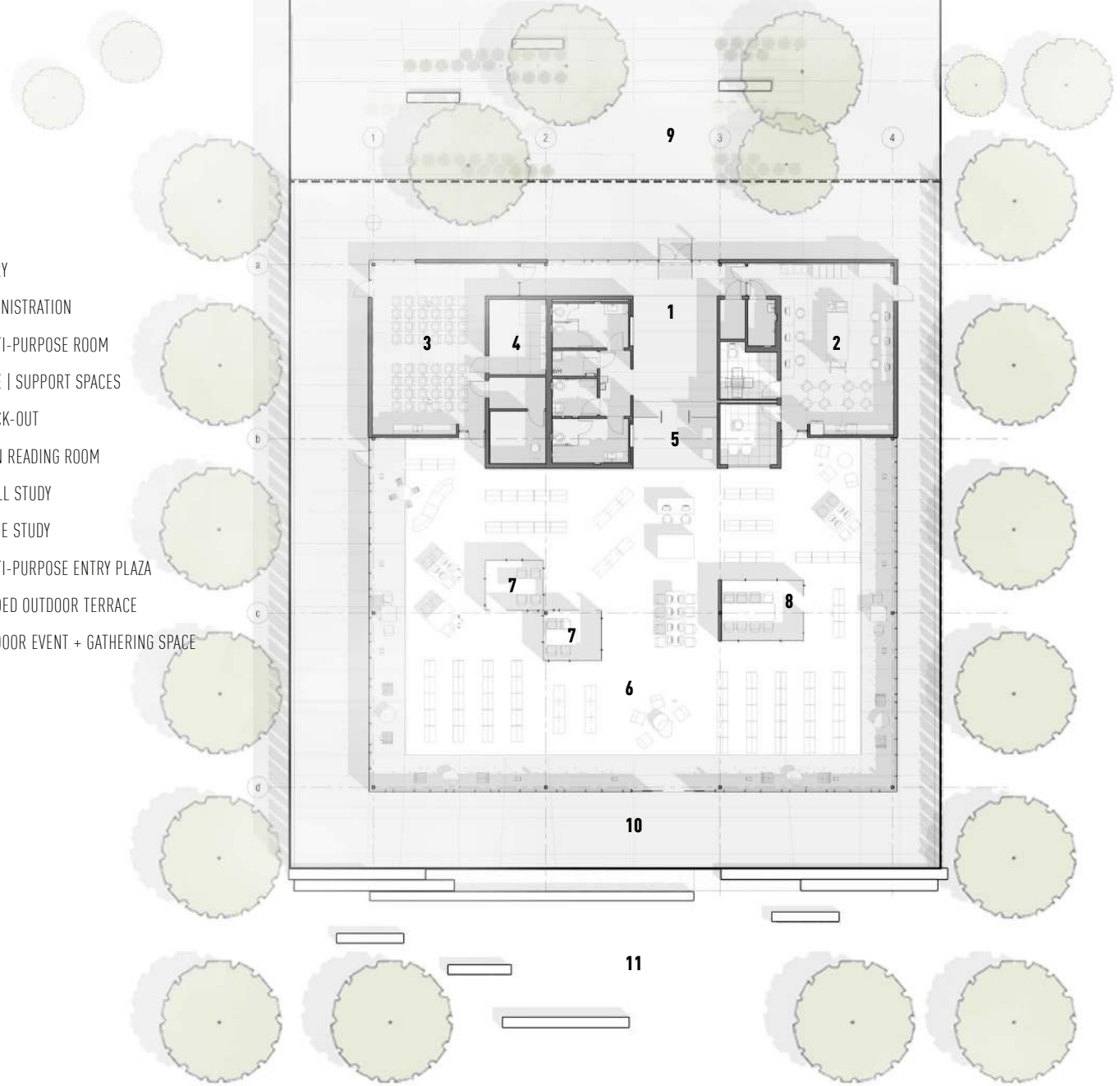
The ample glazing is protected by a scrim and canopy projection on the eastern, southern and western elevations

Constructed of folded perforated metal baffles in a white powder coat finish, the canopy form and perforation provides filtered sunlight to emulate the diffused light of a tree canopy for occupants of the building.

Core support spaces are organized along the north edge of the building within a solid core finished with aluminum composite wall panels, designed to match the scrim and canopy pattern.

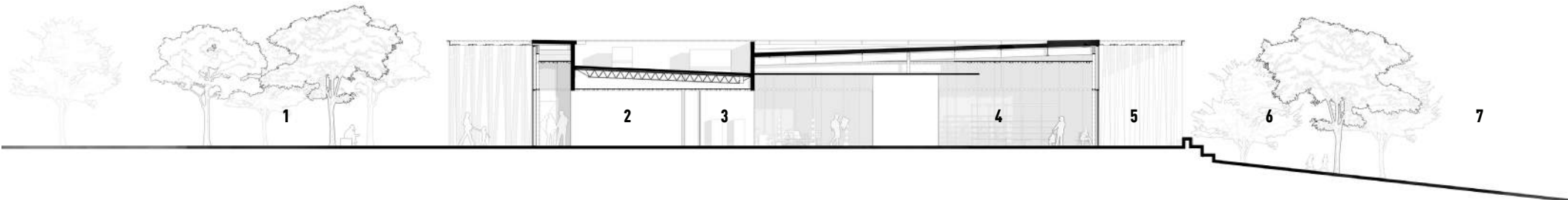
The solid core forms the entry facade for the building and is a backdrop for the multi-purpose entrance plaza between the building and street.

- 1 ENTRY
- 2 ADMINISTRATION
- 3 MULTI-PURPOSE ROOM
- 4 CORE | SUPPORT SPACES
- 5 CHECK-OUT
- 6 OPEN READING ROOM
- 7 SMALL STUDY
- 8 LARGE STUDY
- 9 MULTI-PURPOSE ENTRY PLAZA
- 10 SHADED OUTDOOR TERRACE
- 11 OUTDOOR EVENT + GATHERING SPACE



**SECTION**

- 1 MULTI-PURPOSE ENTRY PLAZA
- 2 ENTRANCE
- 3 CHECKOUT
- 4 OPEN READING ROOM
- 5 SHADED OUTDOOR TERRACE
- 6 OUTDOOR EVENT | GATHERING SPACE
- 7 PARK | RETENTION BASIN



**OPEN READING ROOM**



## INTERIOR

Open reading room provides panoramic views of the park and White Tank Mountain range in the distance.

Open ceiling baffles emulate the exterior canopy reinforcing the connection to the exterior spaces.

Flexible seating and shallow access flooring provides flexibility for building use and organization in the reading room.



## STAFF AREA

Staff area accommodates six workstations, a sorting area, kitchenette and two flexible seating zones for collaborative meetings and break hour.









**STUDY ROOM**



The plinth provides for easy movement from the multi-purpose entry plaza, through and down to the lawns, acting as a terrace for activities in the park.



## SUSTAINABILITY

Utilization of existing park and retention space as the project site reduced the environmental impact of the project.

Ample glazing provides daylight and panoramic views of the surrounding site and distant White Tank mountains from open reading room.

The perforated canopy and scrim provides shade to reduce solar heat gain while still providing diffused daylighting for the interior space.





